

Design Flexibility.  
Field-Proven!

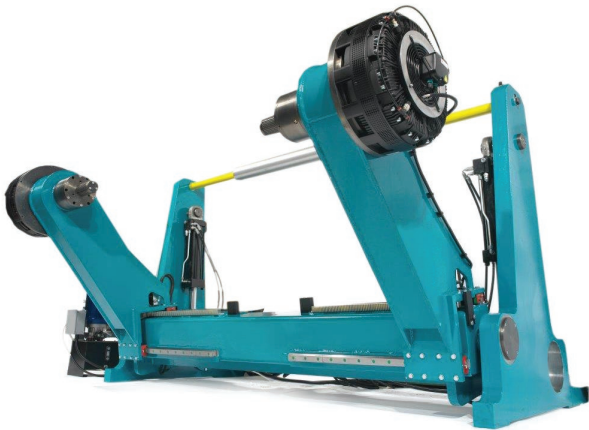
# PURE GOLD CHUCKS - 1400 SERIES

## MODEL 1420 LF/LG Pneu-Mech Chuck -HEAVY DUTY-

- Perfect for UNWIND requiring absolute centering and fail-safe grip. Designed for high roll weight, maximum speed and torque.
- Air actuated piston(s) concentrically expand leaf or lug grippers. Available in either air actuate/spring retract - or - spring engage/air retract designs.
- All parts designed for 24/7 continuous run applications.
- Actuated via rotary union and/or air gun.



Quick Change Tool-less Adapters



## Goldenrod Shaft-less Roll Chucks

- Successful roll stands start with choosing the correct chuck
- Goldenrod offers **three** unique models
- Trusted by equipment manufacturers



## MODEL 1480 LFTX Torque Chuck

- Self-Expanding, no air required
- Easy retrofit
- Concentric expansion at very low tensions
- Flange or center bolt mount



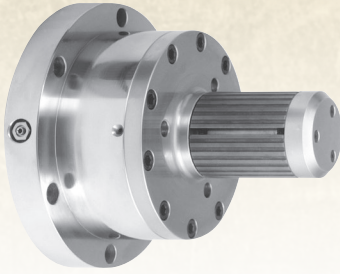
## MODEL 1480 LGAX Axial Chuck

- Roller bearings between the internal inclined planes for smooth expansion
- Self expanding - no air required

**GOLDENROD**  
CORPORATION   
PARTNERED WITH SVECOM P.E.



25 Lancaster Drive, Beacon Falls, CT 06403 USA  
Toll Free 1-800-GOLDROD  
Tel. (203) 723-4400 • FAX (203) 723-8230  
[www.goldenrodcorp.com](http://www.goldenrodcorp.com)



## 1420 LF (Leaf) or 1420 LG (Lug) Pneumatic/Mechanical

High performance, heavy duty steel chuck with one (or more) air-activated piston that mechanically drives ramped expanders outward for perfect centering. Air is introduced through separate port on flange or through a rotary union – your choice. The 1420 is available with either expanding leaves (**Model 1420-LF**) or lugs (**Model 1420-LG**). This chuck is recommended for higher weights, speed and torque requirements for either stop and go or continuous operations.

### Technical Features\*

Core diameter (inches)	3"	4"	5"	6"
Max capacity per chuck (lbs)	2,700	3,150	4,500	5,620
Max torque (in/lbs) in cardboard cores	7,080	9,200	11,500	13,800

Air Pressure – Min 85 PSI



## 1480 LFTX (Mechanical Torque)

Flange-mounted steel chuck with leaves that self-expand through web tension. Under the outer grip leaves are steel roller pins mounted into bi-directional format. The torque of the unwind roll causes the leaves to slide across the roller pins and expand outward to lock. Once tension is released, the grip leaves spring retract to a relaxed position allowing the chuck release grip. Chuck will expand when rotated in either direction.

### Technical Features\*

Core diameter (inches)	3"	4"	5"	6"
Max capacity per chuck (lbs)	3,600	4,720	6,050	7,870
Max torque (in/lbs) in cardboard cores	4,870	7,080	11,000	16,800

Also available in narrow profile designs

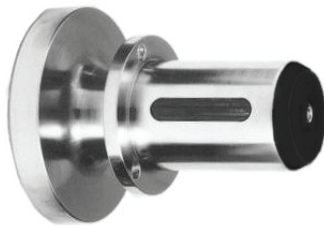


## 1480 LGAX LUG or 1480 LFAX LEAF (Mechanical Axial)

Heavy-Duty Mechanical chuck that uses the side force pressure of your machine arms to expand and grip the core. As the core presses against the core stop flange on the outer housing of the chuck, the outer housing moves back and the lugs or leaves expand with absolute concentricity. The chuck can only expand when the core hits the flange, as the outer nose is part of the inner body.

### Technical Features\*

Core diameter (inches)	3"	4"	5"	6"
Max capacity per chuck (lbs)	2,700	3,370	4,500	5,600
Max torque (in/lbs) in cardboard cores	3,360	3,980	4,780	6,000



\*Standard Models only. Please contact your Goldenrod representative for Non-Standard requirements.

All models available as **STEP CHUCK** format allowing for maximum machine efficiency when changing core sizes.

**GOLDENROD**  
CORPORATION  
PARTNERED WITH SVECOM P.E.



25 Lancaster Drive, Beacon Falls, CT 06403 USA  
Toll Free 1-800-GOLDROD  
Tel. (203) 723-4400 • FAX (203) 723-8230  
[www.goldenrodcorp.com](http://www.goldenrodcorp.com)

