

# REEL TURNER ELECTRIC TROLLEY

## MOD. 410/BMS



rapid movement and  
rotation of shaft with the  
least effort



long life battery



robustness and reliability



made in Svecom



certificate



**The reels turner trolley has been designed for raising and handling of wound reels.**

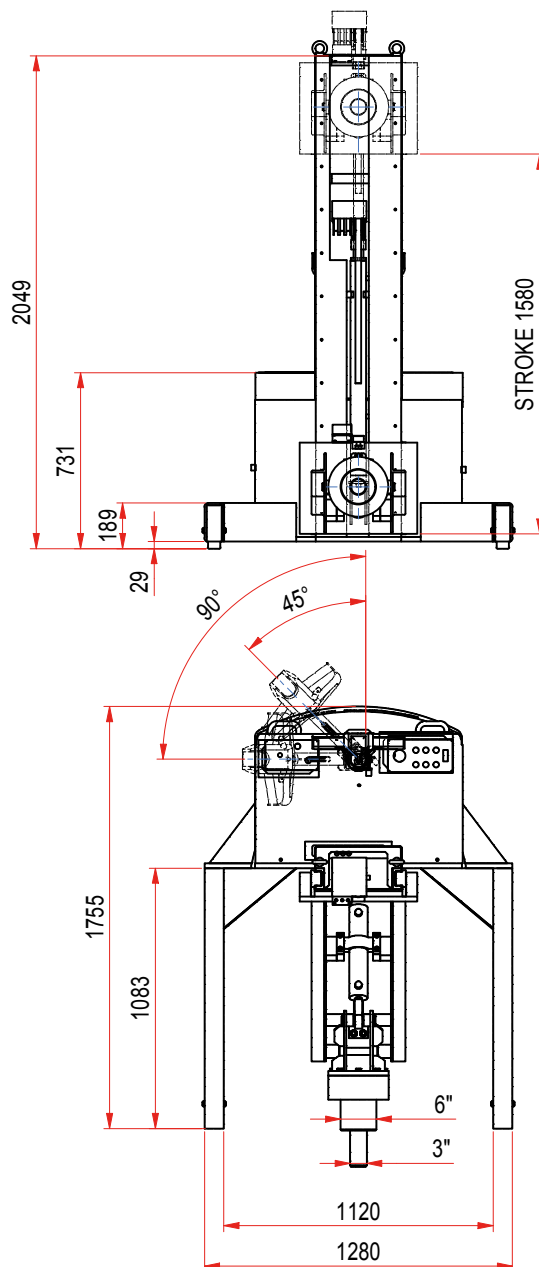
The unit consists of a basic frame on wheels, an electric pump, a piston translating in a vertical mechanical arm mounted on two vertical slides and one piston for the reel rotation. The vehicle moves electrically through four large capacity batteries.

**OPTIONAL**

- Gel batteries
- Right-left clamp movement
- Horizontal translation
- Additional battery pack with quick extraction
- Anti-stripping system
- Double head for gripping 3 "or 6" coils
- 90° stroke

**GENERAL FEATURES MOD. 410/BMS**

- Interchangeable batteries
- 24 V operation (2 batteries of 12 V and 35 kg each)
- Hydraulic movements
- 45° stroke



DATA SHEET*		MOD. 410/BMS
REELS		up to Ø 1500 mm
CLAMP		from 3" to 6"
VELOCITY		2,5 Km/h (reduced with high loads)
HIGH		from 260 to 2060 mm (related to the weight to be lifted)
WEIGHT		Ø 3" => 800 Kg ; Ø 6" => 1500 Kg

\*The technical data are purely indicative. Contact Svecom - P.E. for customized requests