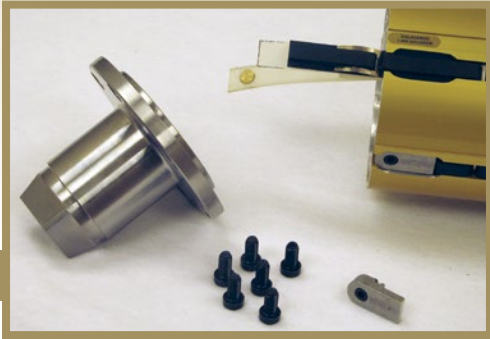


Design Flexibility. Field-Proven!

PURE GOLD

ULTRALIGHT - MODEL 1260

The **Goldenrod/Svecom ULTRALIGHT Model 1260 Multi-Bladder** is the lightest extruded aluminum air shaft on the market.



Key Features:

- Perfect for UNWIND and REWIND
- Biggest Expansion/Contraction Range
- Guaranteed Retraction
- Easy Maintenance
- Simple, Affordable Spare Parts
- Razor PROOF
- Continuous Grip
- BOLT-On Journals Available for certain sizes
- Anodized Body

Options:

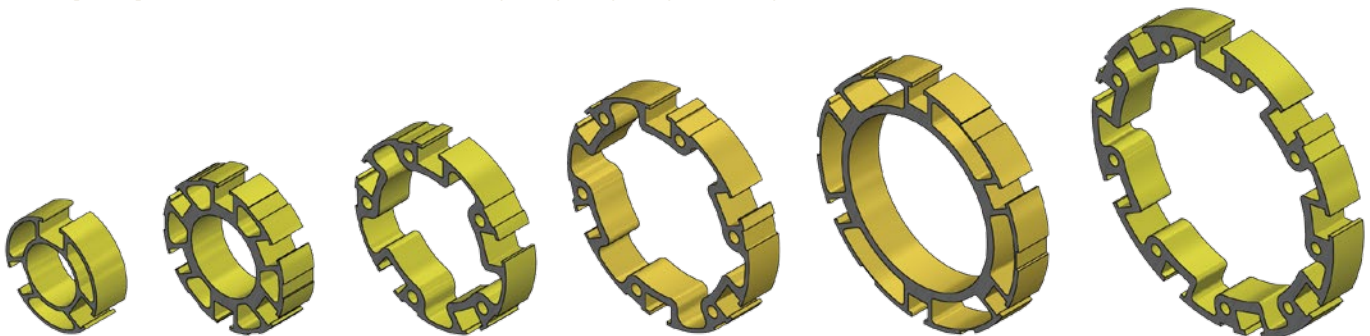
- Removable Handles



- Roller Ledges



Multiple profiles available in 3", 4", 5", 6", 6.75", 8" Diameters.



GOLDENROD

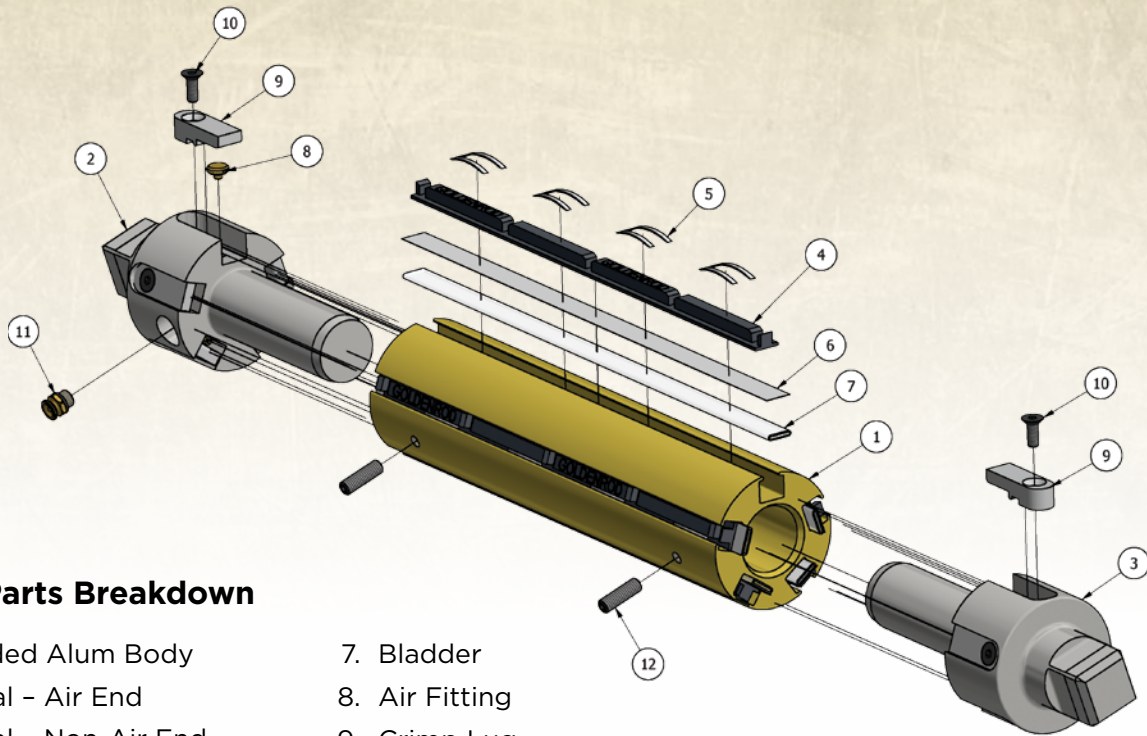


CORPORATION

Goldenrod Corporation - partnered with Svecom P.E.



TECHNICAL SPECIFICATIONS



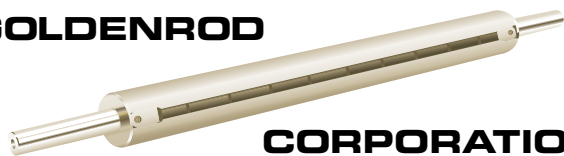
Simple Parts Breakdown

- | | |
|--------------------------|----------------|
| 1. Extruded Alum Body | 7. Bladder |
| 2. Journal - Air End | 8. Air Fitting |
| 3. Journal - Non-Air End | 9. Crimp Lug |
| 4. Grip Ledge | 10. Bolt |
| 5. Retraction Springs | 11. Air Valve |
| 6. Teflon Strip | 12. Bolt |

ALUMINUM

MODEL	CORE ID	# of LEDGES	LBs/INCH ASSEMBLED
1263-LDX Ultralight	3"	3	0.30
1260-LDX Lightweight	3"	3/5	0.40 / 0.42
1264-LDX Lightweight	4"	5	0.59
1265-LDX Lightweight	5"	6	0.72
1266-LDX Ultralight	6"	6	0.64
1260-LDX Lightweight	6"	6/9	0.70 / 0.75

GOLDENROD



CORPORATION

Goldenrod Corporation - partnered with Svecom P.E.



25 Lancaster Drive, Beacon Falls, CT 06403 USA
 Toll Free 1-800-GOLDROD
 Tel. (203) 723-4400 • FAX (203) 723-8230
www.goldenrodcorp.com

