

# Setting The Gold Standard

## Pneumatic Reel Spool Shafts with Centering and Internal Check Valves

The Model 1260-LDB is the air shaft preferred by machine manufacturers for use in the production of jumbo rolls of tissue and paper onto cores. There is no need for the dozens or even hundreds of heavy and expensive reel spools presently used to wind, store, or transport the rolls. **Only 3 to 5 1260-LDB shafts are needed to run non-stop.**

The shafts have two sets of multiple expanding ledges. The steel Centering ledges expand to hold the cores above and concentric to the shaft body and allow the shafts to quickly and smoothly accelerate and run at the highest speeds **without vibration**. All shafts are dynamically balanced to Grade G-1.6.

Strong and positive expansion is provided by the air pressure into the durable urethane bladders

under the rubber Gripping ledges. There are 12 to 24 gripping ledges running the entire face length, each with a steel backing that completely protects the bladders.

Each bladder has its own Internal Check Valve for guaranteed expansion. If one bladder fails, the rest remain inflated; the failure is then easily located and **able to repaired in 10-15 minutes**. Everything is automatically inflated and deflated from one end. The ledges expand much further than other air shafts to provide ample clearance for insertion of the shaft into the cores, and have spring clips to always retract the ledges below the shaft surface.



**Model 1260-LDB Pneumatic Reel Spool Shafts  
complete with bearing housings and coupling ends**

### Goldenrod Corporation

P.O. Box 95 - 25 Lancaster Drive • Beacon Falls, CT 06403  
Toll-free: 800-465-3763 • Phone: 203-723-4400  
Fax: 203-723-823 • [quotes@goldrod.com](mailto:quotes@goldrod.com)

GOLDENROD

# Advantages of the Goldenrod 1260-LDB Reel Spool:

## Experience

- 20 years of successful installations in the paper and tissue industry
- Familiarity with machine manufacturers

## Design

- Multiple Bladder design for core centering, gripping, and ease of use and maintenance
- Steel body construction, high-strength steel alloy journals, and durable urethane bladders
- Shaft bodies are gun bored or centrifugally cast for absolute concentricity
- Always balanced to Grade G-1.6
- Shaft is supplied complete with all bearing housings and coupling ends

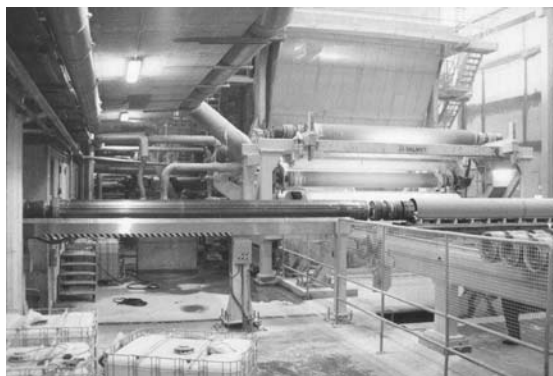


## Performance

- High speed winding with absolute centering of the cores
- 12 to 24 gripping ledges running the entire length for maximum gripping force
- Fail-Safe internal check valves for each bladder ensures cores are strongly held
- No need for locking rings or cones that destroy the ends of the cores

## Reduced Cycle Time

- Greatly reduced inflation and deflation time than competitive shafts; 10 seconds to inflate/20 seconds to deflate
- No locking apparatus to remove when changing spools and no metal or paper spacers required to keep cores aligned
- Greater clearance between core and shaft body for easy insertion into cores due to the Goldenrod Centering feature



## Reduced Safety Hazard

- No heavy wrenches required to remove locking nuts
- No assemblies to come loose and fly off the shaft during turn-up
- Strong and secure gripping even during E-stop conditions
- Less need for overhead lifting cranes

## Savings

- Greatly reduced number of shafts required
- Significantly increased throughput with non-stop production
- Reduced maintenance costs-one of the 1260-LDB bladders costs about \$100 and can be replaced in less than 20 minutes
- No expensive roll coverings to repair or replace

## GOLDENROD CORPORATION

Goldenrod Corporation – an affiliate of Svecom P.E.

P.O. Box 95-25 Lancaster Drive, Beacon Falls, CT 06403 • TEL (203) 723-4400 • FAX (203) 723-8230 • TOLL FREE (800) 465-3763

[www.goldrod.com](http://www.goldrod.com) • [quotes@goldrod.com](mailto:quotes@goldrod.com)

